

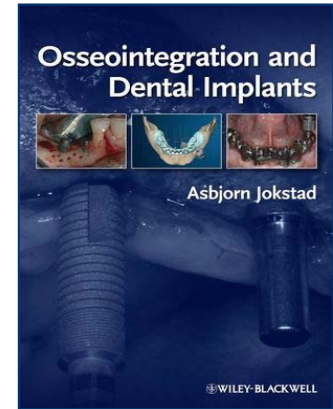
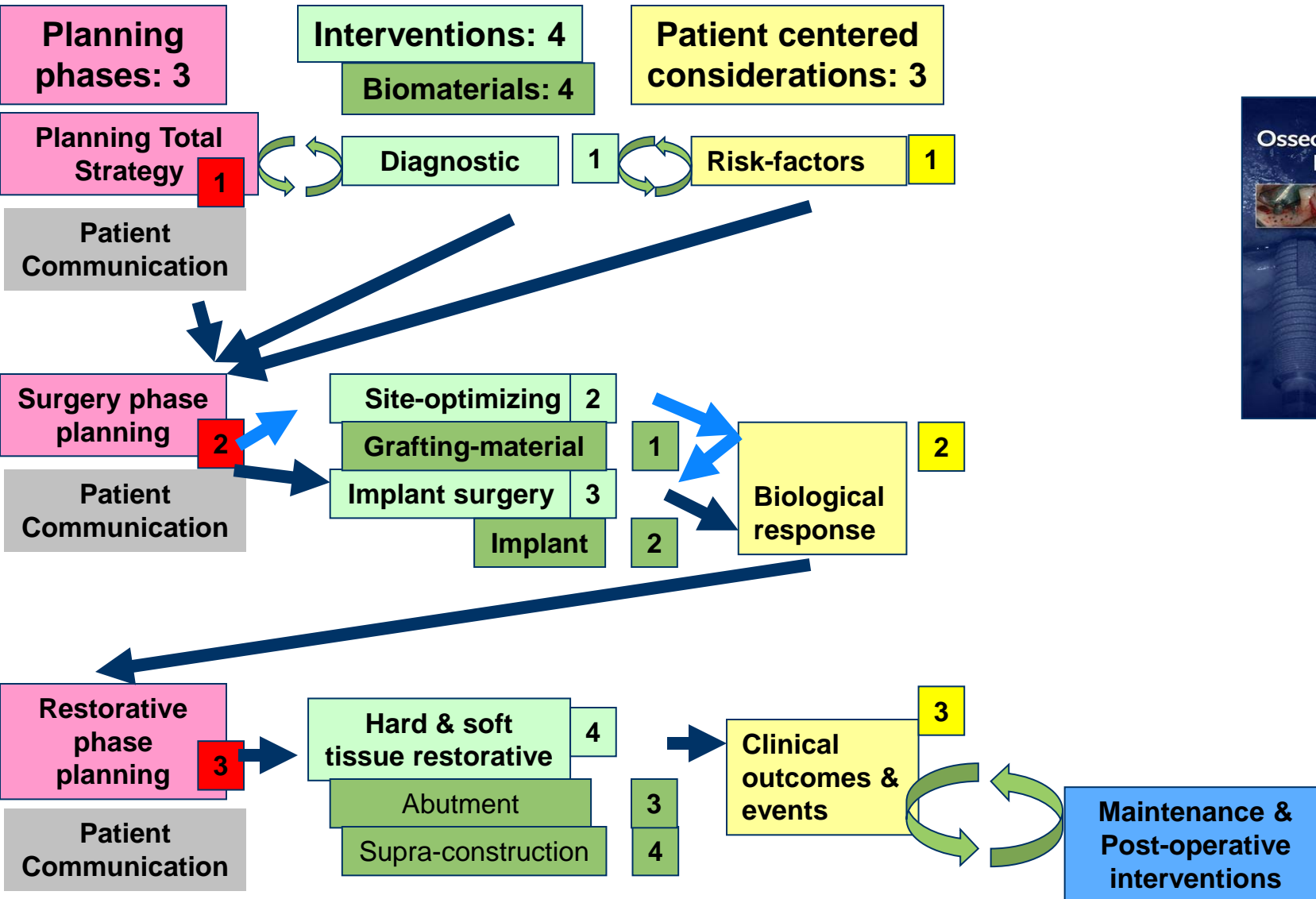


Early & Immediate loading of Oral Implants

Asbjørn Jokstad, DDS, PhD
Professor and Head, Prosthodontics
Faculty of Dentistry, University of
Toronto

Holland Bloorview ITI Education Week
October 26, 2011

The 10 steps of Implant Prosthetic Treatment



SETTING



Doris and Harry were both provided with conventional prostheses many years back. Both call you and inform that they've been advised by a periodontist that all teeth need to come out due to refractory chronic periodontitis. Appointments are booked....

Clinical examination



"Doris"

(Age 54)

"Harry"

(Age 84)



1. Planning Total Strategy



2. Diagnostic tests



3. Risk-factors

Diagnostic Tests



"Doris"
(Age 54)

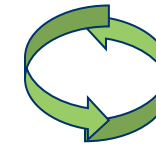
"Harry"
(Age 84)



1. Planning Total Strategy



2. Diagnostic tests



3. Risk-factors



10
yrs

18
yrs



DET ODONTOLOGISKE FAKULTET, OSLO
Klinikk for odontologisk røntgenologi

Pt.
54
yrs



Pt.
84
yrs

1. Planning Total Strategy



2. Diagnostic tests



3. Risk-factors

Provisional treatment: Extractions & interim denture

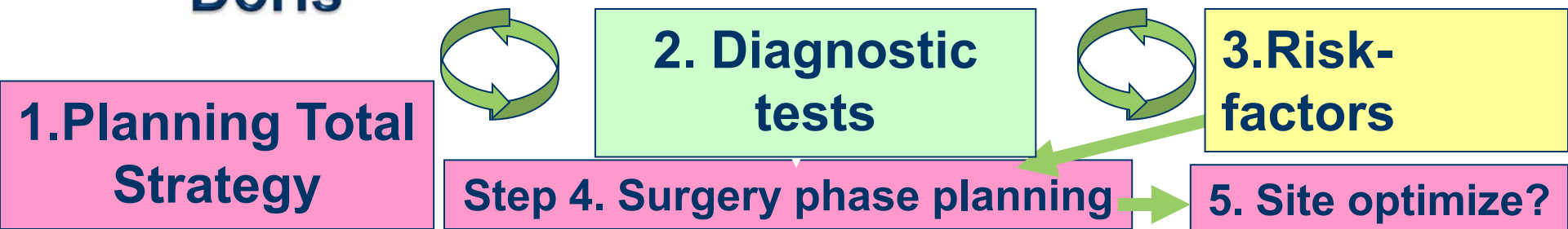


Evaluation of biological response after interim denture period before planning the surgery phase



"Doris"

"Harry"

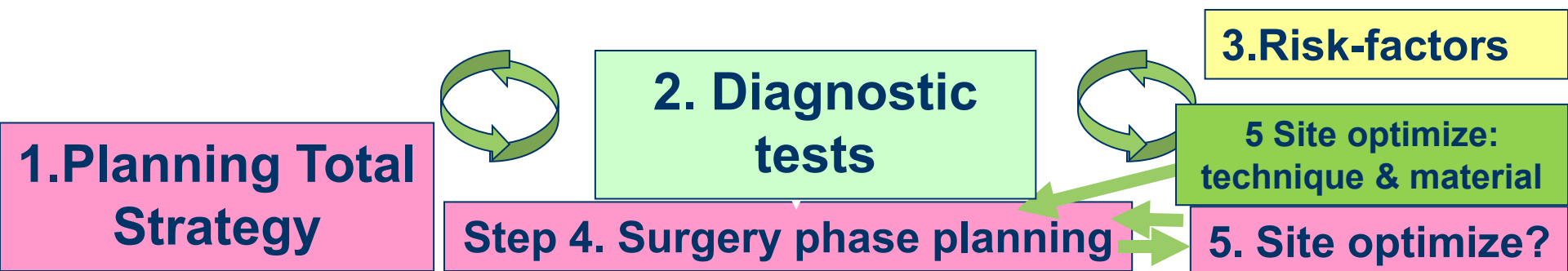


Planning for the surgery phase

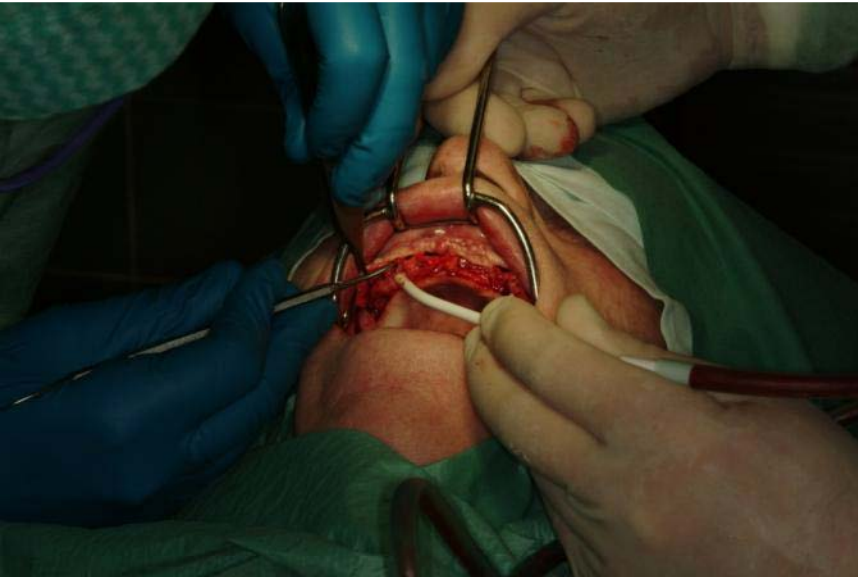
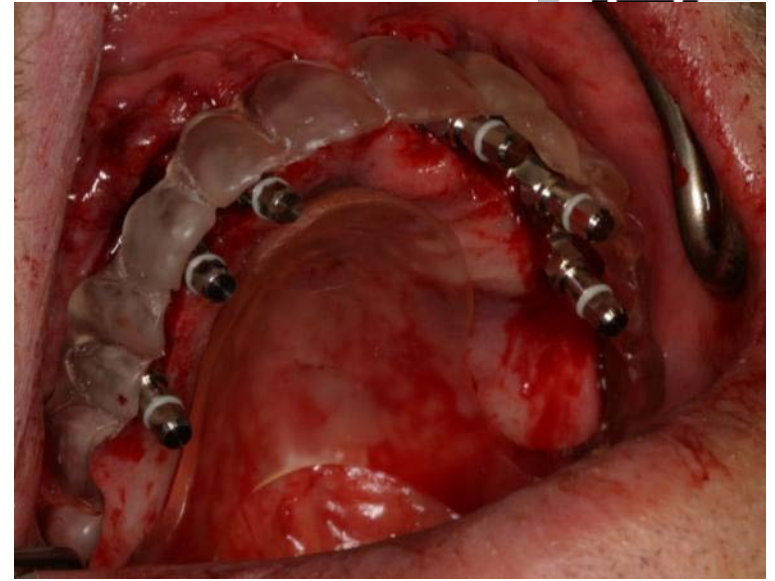


"Doris": Delayed loading – One stage approach

"Harry": Immediate loading



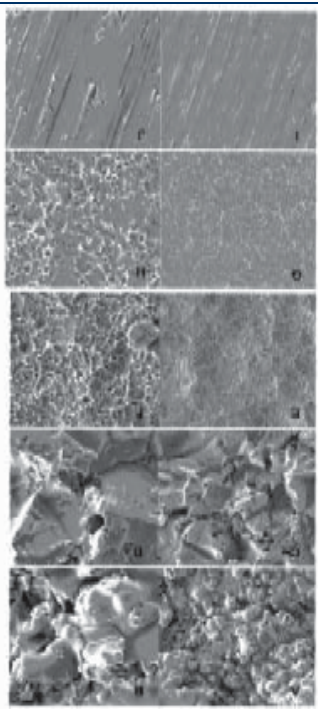
Surgery Interventions- The surgery techniques



"Doris" (delayed loading)

"Harry" (immediate loading)

Which implant system?



FIXED PROSTHESIS BARS



"Montréal" type bar without metallic lingual



"Montréal" type bar with metallic lingual



Titanium type : TITANE GALV

KAL SYSTEM

KAL System (available with all bar types)



Titanium type : TITANE GALV

Planning for the Restorative phase



KAL SYSTEM



KAL System (available with all bar types)

FIXED PROSTHESIS BARS



Fixed bar "Montréal" type without metallic lingual



Fixed bar "Montréal" type with metallic lingual



Wrap Around bar

REMOVABLE PROSTHESIS BARS



"Paris" type bar



Round bar



Dolder® bar



Mixed bar (ex. Milled bar with Dolder® extensions)



Milled bar



Hader bar

REMOVABLE PROSTHESIS BARS

Dolder® bar



	Macro	Micro
Rigid		
Resiliente		

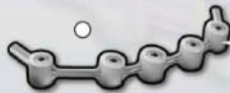
Milled bar



Hader bar



Round bar



"Paris" type bar



Mixed bar (ex. Milled bar with Dolder® extensions)

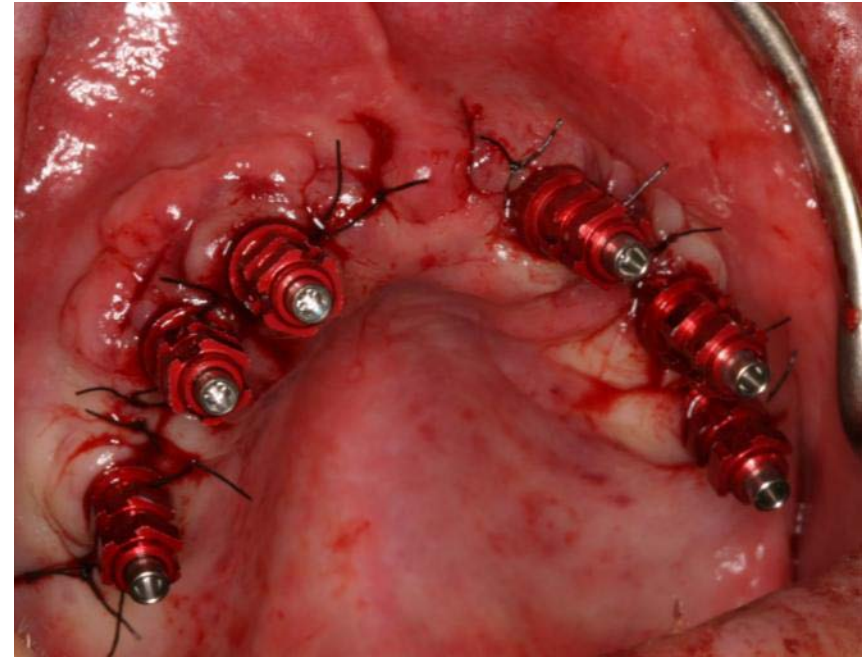


Titanium type : TITANE GALV

Restorative phase commencement

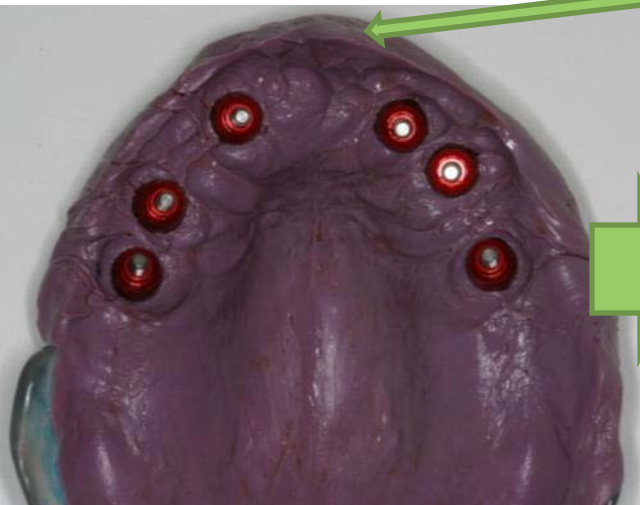


"Doris" (delayed loading):
7 AstraTech implants with
healing abutments



"Harry" (immediate loading):
6 Straumann implants with
Open tray impression pins

Restoration of hard and soft tissues – Immediate loading



"Harry" → immediate loading

Restoration of hard and soft tissues – delayed loading



"Doris" → one-stage delayed loading

Restoration of hard and soft tissues – jaw relationships



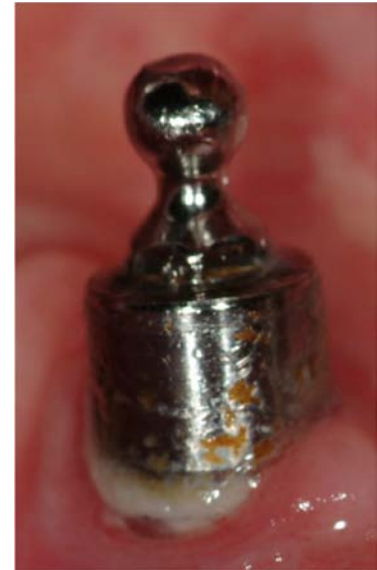
Establish vertical & horizontal relationships



Verify tooth placement, vertical & horizontal

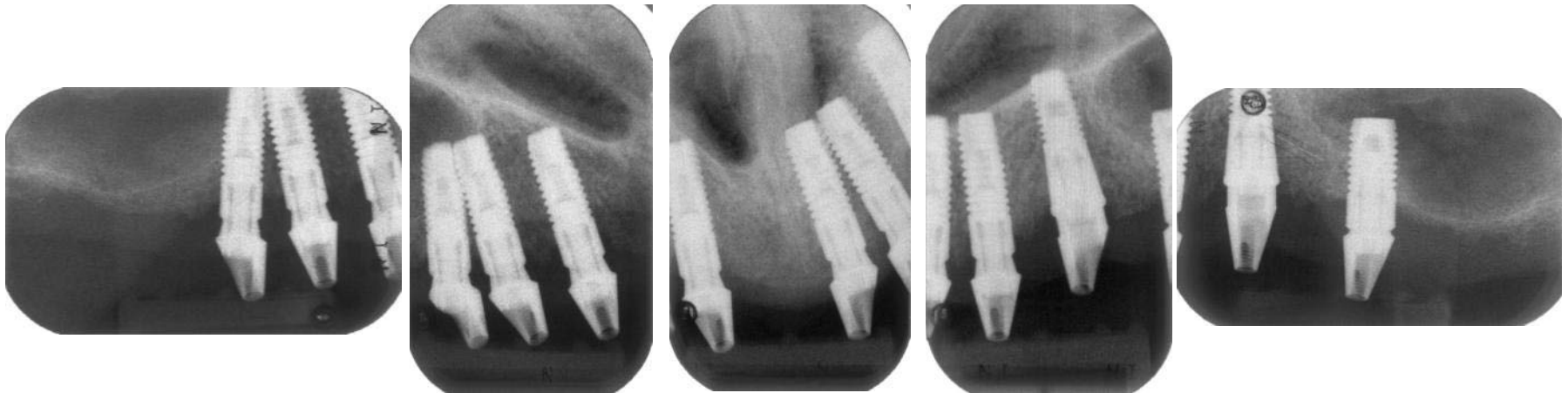
"Doris" → one-stage delayed loading

Design&material for abutment, meso-structure and retention?



"Doris" → one-stage delayed loading → abutments?

Restorative interventions – fabricate and fit abutment



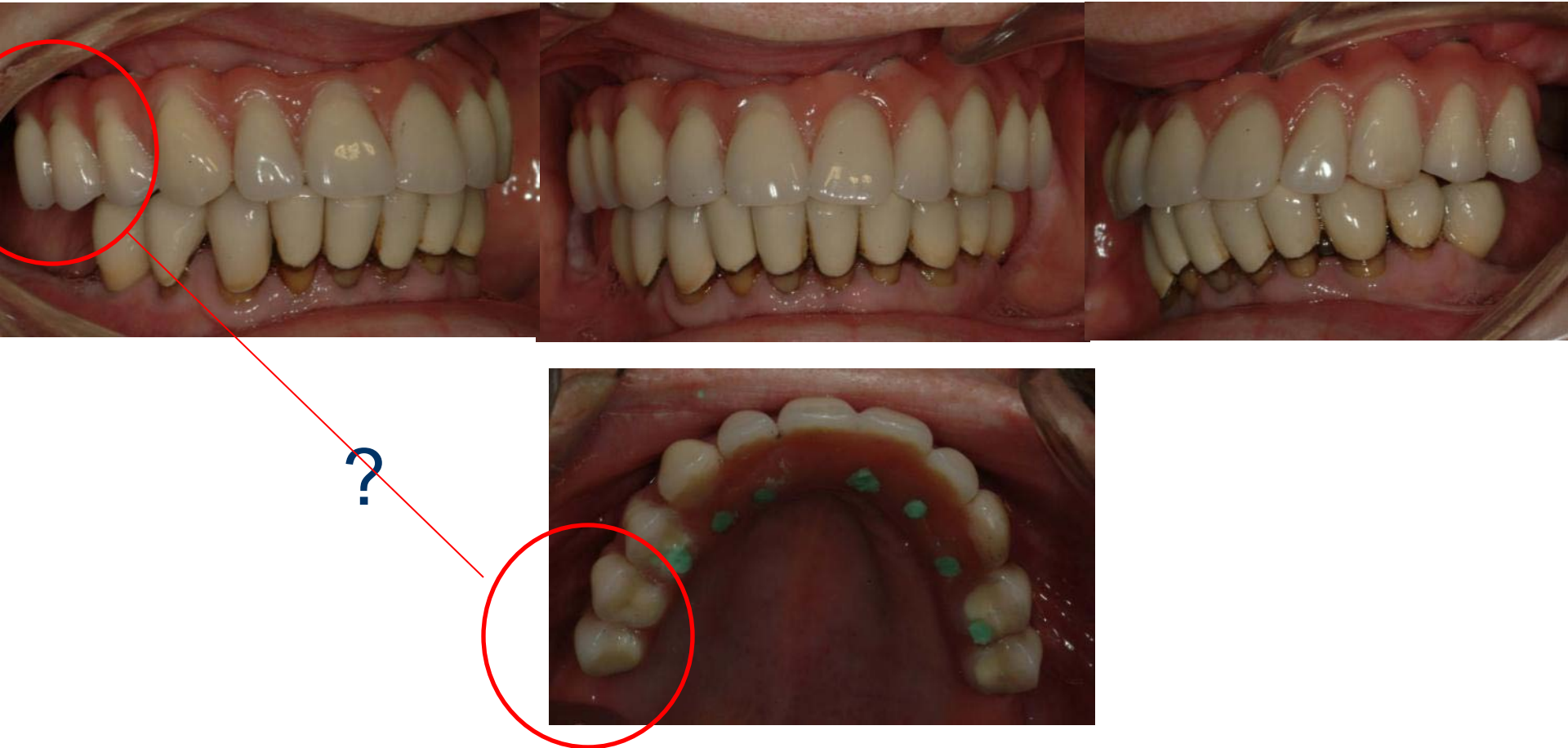
"Doris" → one-stage delayed loading → custom abutments

Restorative intervention - fabrication and fit of supra-structure



"Doris" → one-stage delayed loading → custom abutments → screw-retained FDP

Restorative intervention outcomes and prognosis



"Doris" → one-stage delayed loading → custom abutments → screw-retained FDP



Evaluation of the final outcome



Focus on patient centered
and not on surrogate
criteria!:

Baseline - Edentulous	3 mths
Edentulous - Implant	6 mths
Implant - Healing	6 mths
Healing - Fabrication	2 mths



1. Esthetics
2. Satisfaction
3. Quality of life
4. Function

Maintenance and possible follow-up interventions



- Routines
- Diagnostic protocols
 - Clinical
 - Radiographic
- Corrections of:
 - Papilla defect
 - Soft tissue correction
 - Local bone defect
 - Peri-implantitis
 - Post-sensitivity

